

SJM 2007

Widely Installed & Most Successful
Patterned Auto Edger

SJM 2007



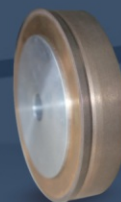
Lens Centering Device



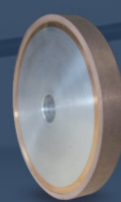
Demo Drilling Machine



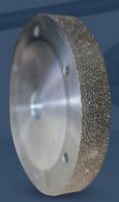
Mirror Finish Wheel



V-Groove / Flat Wheel



Glass Rough Wheel



CR / PC Rough Wheel



Stable



Flexible



Fast



Accurate



Follow us :
www.oiepl.in



OPTICS INDIA
EQUIPMENTS PVT. LTD.

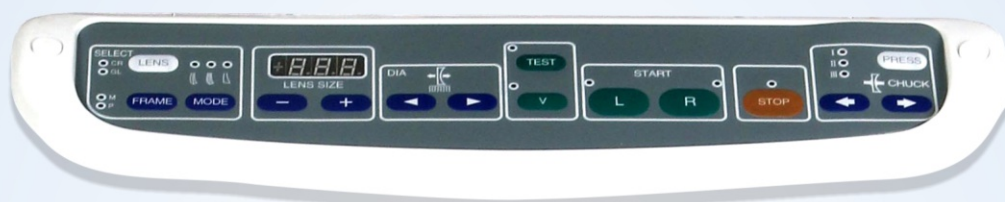
SJM 2007...

Widely Installed & Most Successful Patterned Auto Edger

JINGLIAN
SHANGHAI

JINGLIAN is known for the technology at an affordable price and also as a leader in the patterned edging system. Optics India Equipment Pvt. Ltd. are the Sole Distributor of the complete range of Jinglian Edgers in India.

The Jinglian - SJM 2007 is loaded with the latest technology, enabling it to be more speedy, stable and accurate. The advanced grinding wheels can edge any mineral lens or organic lens including polycarbonate quite smoothly. It's friendly and personalized user interface makes any operator a skilled & professional eyeglass fitter. The elegant appearance and strong cost versus benefits, make the Jinglian - SJM 2007 the most preferred Auto Edger world wide.



PERFORMANCE MERITS

- 8 bit microprocessor Controlling System.
- 3 step automatic clamping pressure adjustable.
- Selectable cutting Pressure.
- Auto calibration system.
- Unique design of guided bevel attachment.

SPECIFICATIONS

SJM 2007 Auto Edger

Edging System	: Patterned guided	Power supply	: AC 220-240V/50-60Hz/750 watts
Workable Diameter	: Ø23-Ø 80 mm	Dimensions	: 500 x 780 x 420
Clamping Pressure	: 0.5-0.78 mp	Table Height	: 750 mm
Noise	: <60db	Weight	: 60 Kgs
Diamond Wheels	: CR / PC Rough, Glass Rough, V-Groove / Flat Finish, Mirror Flat Finish		

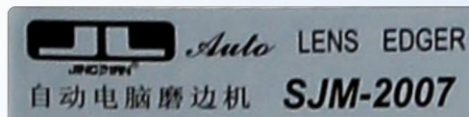
Lens Centering Device

- Visible trans-illumination system
- Convenient sliding plate
- Power supply: 220V, 10W

Demo Drilling Machine

- Simple for handling and easy for cleaning
- Low noise and low vibration
- Power supply: 220V, 50Hz, 50W

* Specifications are subject to change without prior notice.



OPTICS INDIA
EQUIPMENTS PVT. LTD.

📍 "Hari Krupa", Adj. Punjab National Bank, Naya Padkar Lane, M.G. Road, Anand-388 001. Gujarat, INDIA.

☎ +91 02692 257646 ✉ info@oiepl.in 🌐 www.oiepl.in

📞 For Inquiry & Details, please contact

GUJARAT
92271 61736
92271 61737

MUMBAI
98929 80847
92271 61731

KOLKATA
92271 61724
80011 29595

DELHI
92271 61725
92271 61726

SOUTH INDIA
92271 61727/38
92271 61731