

Experience the pride of ownership

GS LED Slit Lamp MW50D



- World class, enhanced optical & digital technology
- A high-end product yet with amazing value for money

GS LED Slit Lamp-MW50D

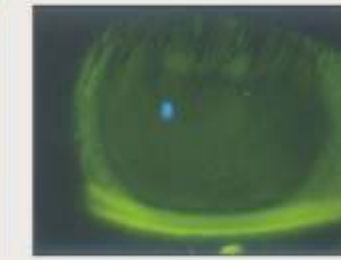
- Revolutionary Magnification range **5x, 10x, 16x, 25x, 50x** • Ultra fine optics • Built in Barrier Filter
- Background Illumination • Long Slit Length of **16mm** • Optimal LED Light Source
- CMSO CCD with versatile digital imaging system



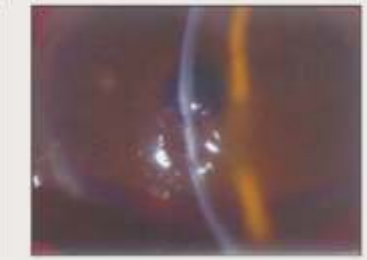
16x meibomian gland



50x meibomian gland



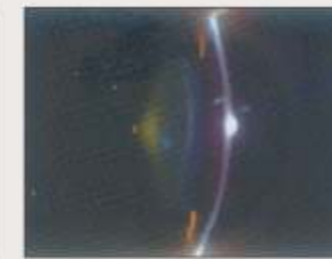
Fluorescence image



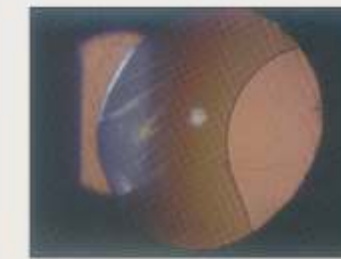
Cornea
(background illumination on)



Iris (diffuse illumination)



Crystalline lens



Transillumination



Disk (with 90D lens)

Main Body			
Microscope	Type	Drum-type 5-step magnification (Angle of inclination:13.2°)	
	Eyepiece magnification	12.5x	
	Total magnification	5x, 10x, 16x, 25x, 50x	
	Field of view	Field of View Ø44.5, Ø22.3, Ø14.2, Ø9.0, Ø4.5	
	Eyepiece diopter adjustment range	-8D to +8D	
	PD adjustment range	55 mm to 80 mm	
	Working distance	100.5 mm	
	reaching distance	314.0 mm	
	Illumination system	Light source	5W white LED
		Slit width	0 mm to 16mm continuously variable
Slit rotation angle		90° to right and left	
Slit length		Ø0.2, 1, 2.5, 10, 14, 16mm, 1 to 12mm continuously variable	
Slit vertical angle		0°, 5°, 10°, 15°, 20° from lower angle	
Slit tilting width		8 mm to right and left from target surface	
Filters		Fully transparent, ND (12.5% reduction), green, blue	
Arm unit	Rotation angle	90° to right and left	
Cross slide table	Horizontal movement	100 X 110 mm (joystick operation)	
	Vertical movement	30 mm (joystick rotation)	
Weight	Main body	13 kg (without digital unit)	
		13.8 kg (with digital unit)	
Dimensions		350 (W) X 678.5 (H) X 387 (D) mm	

- Specifications and design are subject to change without prior notice for improvement.
- The color of instrument on the catalogue and the real product might be different.

Digital Camera	
CCD	1/2.5" CMOS
Resolution	2592 X 1944 (5M px)
Video image output	HD 1296 X 972 pixels
Frame rate	30 fps
Interface	USB3.0
Power supply	Input: 5V, Power consumption: 3W
Weight	790 g
Dimensions	107 (W) X 227 (H) X 55 (D) mm

Power Unit	
Input	AC100V - 240V 50/60Hz
Output	DC12V / 3.75A (max.)
Power consumption	35 VA
Weight	450 g
Dimensions	105 (W) X 48.5 (H) X 130 (D) mm

System requirement for GS MW File	
OS	Windows 7, 8.1, 10 /64 bit
CPU	Intel core i5, 1.5 GHz or more
Memory	2GB or more
Interface	USB3.0 (1 port or more), or USB2.0 (1 port or more)
Monitor resolution	1366 X 768 pixels or more
Optical drive	DVD/CD drive
Data format	Still image: JPEG Movie: AVI